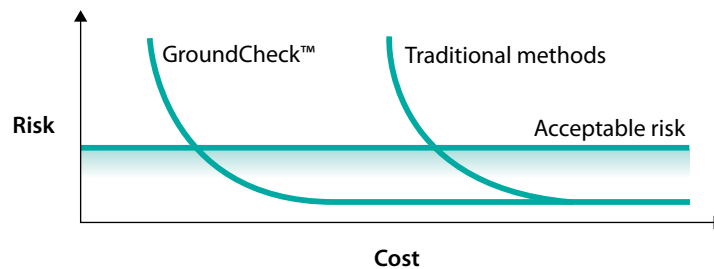
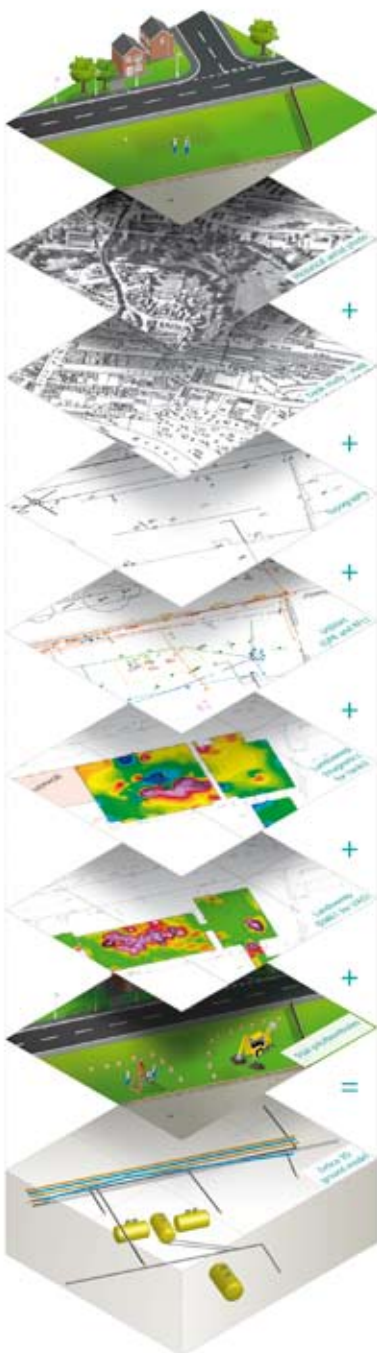


GROUNDCHECK™

CUTTING COSTS BY MANAGING IN-GROUND RISKS

Unforeseen ground conditions can critically disrupt developments and result in costly redesign work and project delays.

Zetica's new GroundCheck™ service helps clients to reduce site development risks and site investigation costs by providing a comprehensive suite of information faster and in an easily managed format. The use of modern geophysical and traditional techniques reveals unknown ground conditions at a lower cost than traditional methods alone. This means that it becomes feasible to evaluate ground conditions sooner in a development project. GroundCheck™ optimises the integration of desk-study information, up-to-date above- and below-ground 3D site mapping techniques, and targeted ground investigation.



COMPREHENSIVE AND INTEGRATED

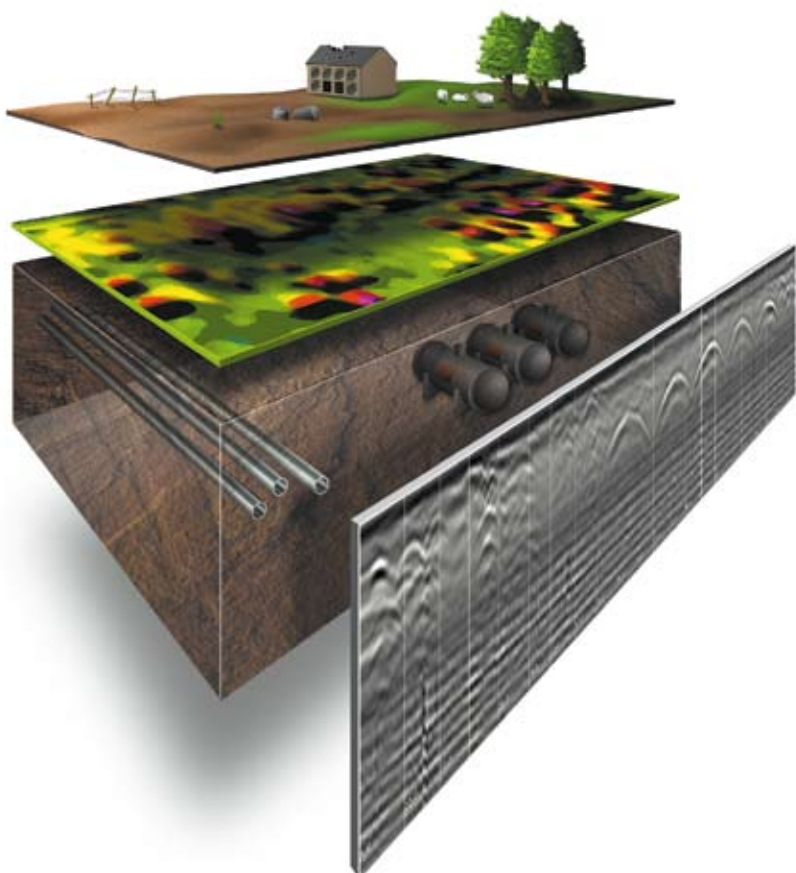
GroundCheck™ includes

- **surface topographical surveys** delivered in CAD and or GIS format. These provide a map of your site, its terrain, above-ground structures and accurate area boundaries.
- **utilities mapping**, which uses methods such as real-time tracing and non-intrusive geophysical techniques to verify the location and invert levels of known or suspected utility services, and to locate unknown services. All the utility services and the associated manholes are accurately mapped on a CAD drawing of the site. CCTV condition surveys are also carried out on drains and sewers.
- **in-ground structure surveys** using desk studies and non-intrusive geophysical techniques to identify tanks, buried structures (for example, pile caps and foundations), voids, gasholders and other structures. Targeted intrusive investigations of the detected features can also be carried out if required.
- **management of unexploded ordnance (UXO), including unexploded bombs (UXB)**, risk incorporates desk studies, non-intrusive geophysical surveys, intrusive investigations and UXO removal. We focus on risk and only do what is necessary to manage that risk.
- **geotechnical information** from desk studies and a mixture of non-intrusive and intrusive techniques. This ensures that we deliver maximum information from the combined surveys.
- **contamination assessments** from desk studies, geophysical techniques and phase-two ground investigations.

GroundCheck™ delivers a single package of information as CAD drawings, GIS layers and written reports, which can be used easily across your organisation and included in tenders.

AVOIDING DELAY AND COSTS

"Zetica's ability to provide a multidisciplinary range of ground investigation services has enabled us to de-risk our projects by finding out more about what is under the ground at our sites before the contractors find the problems for us. The cost of Zetica's comprehensive service is small compared to the redesign, delay and disruption caused when unforeseen obstructions are encountered." Project director, major developer, 2007



GroundCheck™ reduces risks, including those associated with

- utilities
- voids
- mineshafts
- buried structures (foundations, pile caps, etc.)
- tanks
- UXO
- gas holders
- geotechnical uncertainty
- contaminated land issues.

"Zetica provides a quality service, within tight time scales, every time. The detailed historical analysis that Zetica provides has been valuable for the whole project team, and assisted us in our master planning for sensitive sites."

Senior consultant, geo-environmental consultancy, 2008

UK head office

Units 15–16
Hanborough Business Park
Long Hanborough
Oxfordshire
OX29 8LH
UK

Tel: +44 (0)1993 886682
Fax: +44 (0)1993 886683
Email: info@zetica.com

www.zetica.com

zetica

